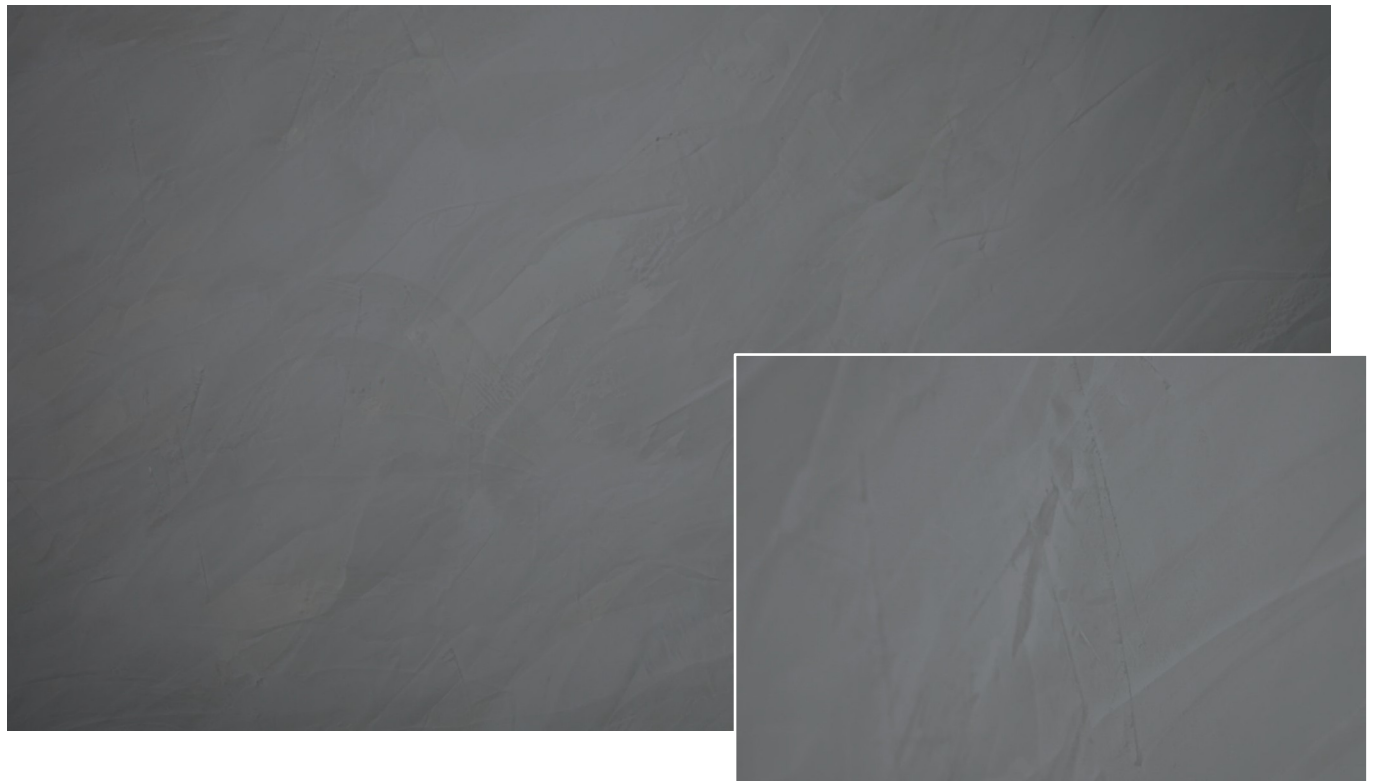


StuccoDecor Di Luce "Marble"



The special surface appeal of this creative technique is produced in particular by the interplay of the tool, the application worker's "signature" and the bonding of the semi-transparent material. This technique imparts the sheen, smoothness and coolness of genuine polished marble. A mirrored shine combines with a congenial surface feel to produce for the viewer the pleasant effect of the applied StuccoDecor Di Luce technique.

StuccoDecor Di Luce is a semi-transparent formulated material which is applied twice by means of a flexible caulker over the whole area. During the material application the shine develops of its own accord and once the material has been applied, the shine can be developed to a mirror finish by further polishing. In this way with this technique an impressive depth effect is obtained despite the low layer thickness.

Material and consumption:	<ul style="list-style-type: none"> • Akkordspachtel Fein (TI No. 643, filler) approx. 1800 g/m²/mm • CapaSol LF (TI No. 654) approx. 100 ml/m²/application • StuccoDecor Di Luce (TI No. 561) approx. 90 ml/m²/application
Tools:	<ul style="list-style-type: none"> • Abrasion-free double-blade flexible caulker • Jointing knife
Substrate:	With Caparol Akkordspachtel Fein the substrate should at least fulfil the requirements for plaster substrates according to Quality Level Q4. In this respect follow the Technical Information Nos. 643 and 561.

StuccoDecor Di Luce "Marble"

1st Working Step:

Using the double-blade flexible caulker, the StuccoDecor Di Luce is applied to the Akkordspachtel Fein, which has been sanded down and primed with CapaSol LF, in diagonal strokes from the top to bottom or from the bottom to the top. In doing this, not too much material should be applied.

Note: With this technique always start applying the material from a wall boundary (ceiling, floor, etc.), because starting in the middle of the area has a detrimental effect on the visual appearance of the surface. A start in the middle of the area should always be positioned such that the following stroke can cover it.

2nd Working Step:

Initially, the procedure in the second step is the same as in the first one. After a brief flash-off time the surface is then polished to a mirror shine with the double-blade flexible caulker without exerting a lot of pressure on the surface.

Please note that this creative leaflet presents a summary of our experience in producing decorative techniques. It does not release you from your obligation of properly checking and assessing the substrate according to your own knowledge before starting work and, if necessary, taking further measures. During application the relevant Technical Information Sheets for the products used should be followed. They and these creative leaflets can always be found in the latest version at www.caparol.de. Here you can also view the associated creative videos.

The colours presented should only be regarded as recommendations. Individual customer requirements can be applied any time. The illustrated surfaces are produced by printing and may slightly differ in shade to the genuine coating. Consequently, it is essential to produce a sample for the customer – also because each application worker has a different "signature".